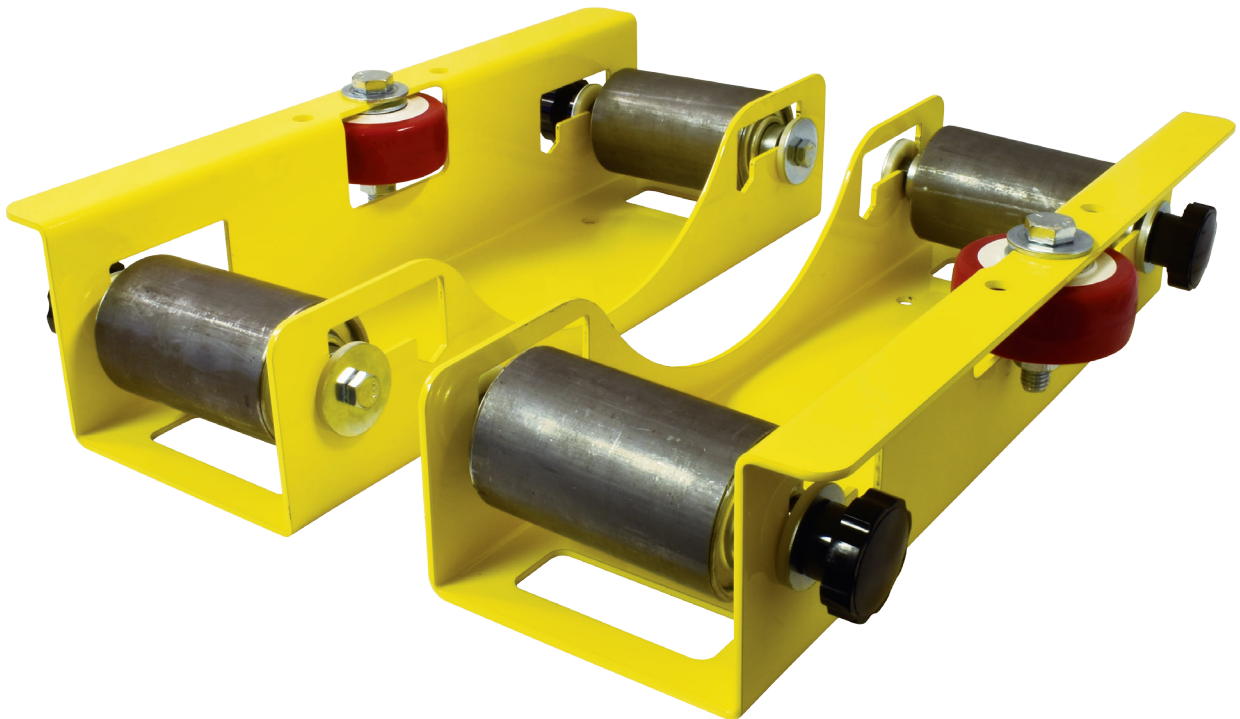


# SMP-RP-MPX

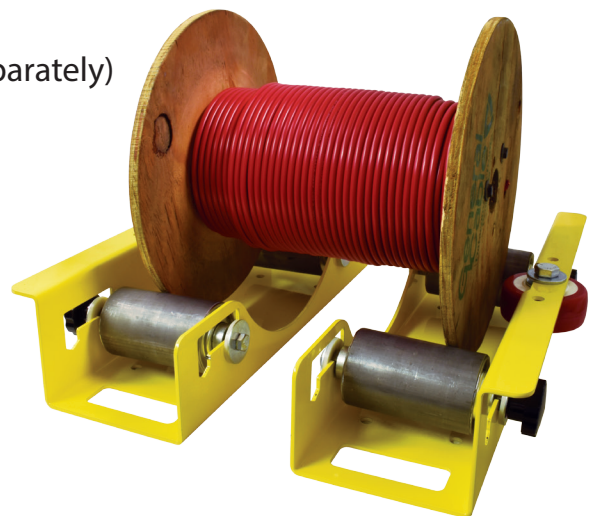
**Unlimited Width Cable Reel Roller System (Sold in Pairs)**



The SMP-RP-MPX reel roller system is ideal for storage, dispensing and management solution of cable reels ranging from 12" to 30" in diameter. The SMP-RP-MPX is sold in pairs and can accommodate cable drums with weights up to 750 pounds. The ten (10) gauge steel frames include three (3) position adjustments for the rollers, carrying handles for easy transport and pre-drilled holes for permanent mounting applications.

## Features:

- Sold as a set: one (1) SMP-RP-MPX per reel (reel sold separately)
- 750 lbs. capacity per pair
- Product weight: 15 lbs. each (30 lbs. per set)
- Minimum reel width: 6" (15 cm)
- Maximum reel diameter: 30" (76.2 cm)
- Hex bore ball bearing reel rollers
- Frames constructed of 10-gauge steel
- Powder coated finish
- Three (3) position roller adjustment
- Pre-drilled base for bolt-down installation
- Outside roller dimensions: 4.5" H x 7" W x 17" D
- Made in the USA



P.O. Box 12017 Marina del Rey, CA 90292  
Phone: 310-822-6290 Fax: 310-306-9343  
Email: [info@spoolmaster.com](mailto:info@spoolmaster.com)  
Visit us online at [www.spoolmaster.com](http://www.spoolmaster.com)



# SMP-RP-MPX

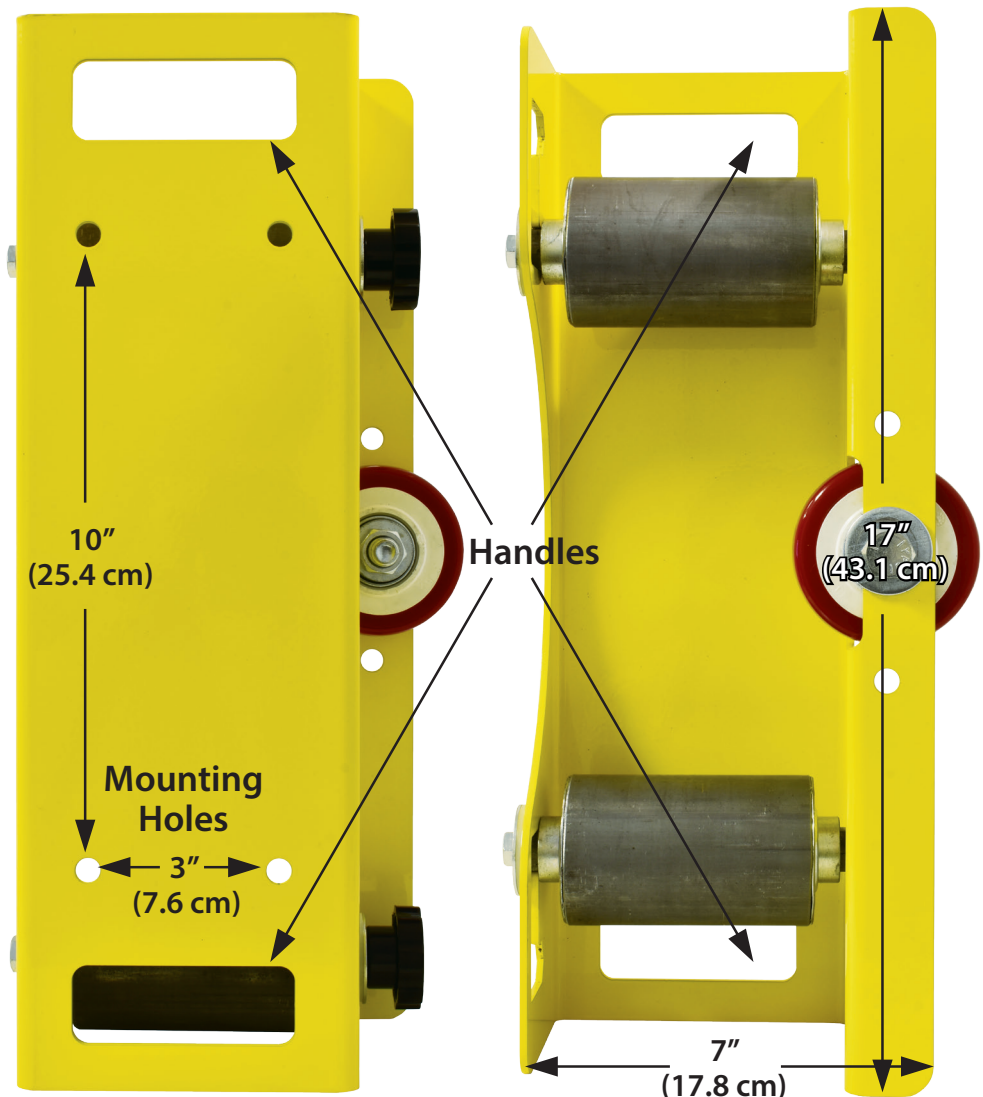
## Unlimited Width Cable Reel Roller System (Sold in Pairs)

### Dimensions Per Roller:

**Length:** 17" (43.1 cm)  
**Width:** 7" (17.8 cm)  
**Depth:** 4.5" (11.5 cm)  
**Weight:** 15 lbs (6.8 kg)

### Distance Between Center Points on Rollers:

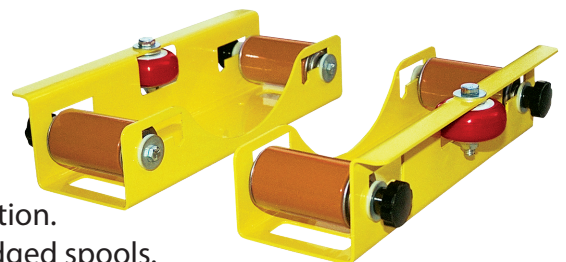
**Position 1:** 10" (25.4 cm)  
**Position 2:** 12" (30.5 cm)  
**Position 3:** 14" (35.5 cm)



## Accessories for Reel Roller Systems

### Compatible with the optional SMP-PRC Polyurethane Roller Covers (Orange Rollers)

Protect the steel rollers and bearings from impact, shock and vibration. Extends the life of your reel rollers, especially when using rough-edged spools. One (1) SMP-PRC covers all four (4) rollers on one (1) SMP-RP-MPX set and must be ordered at the same time.



P.O. Box 12017 Marina del Rey, CA 90292  
Phone: 310-822-6290 Fax: 310-306-9343  
Email: [info@spoolmaster.com](mailto:info@spoolmaster.com)  
Visit us online at [www.spoolmaster.com](http://www.spoolmaster.com)

