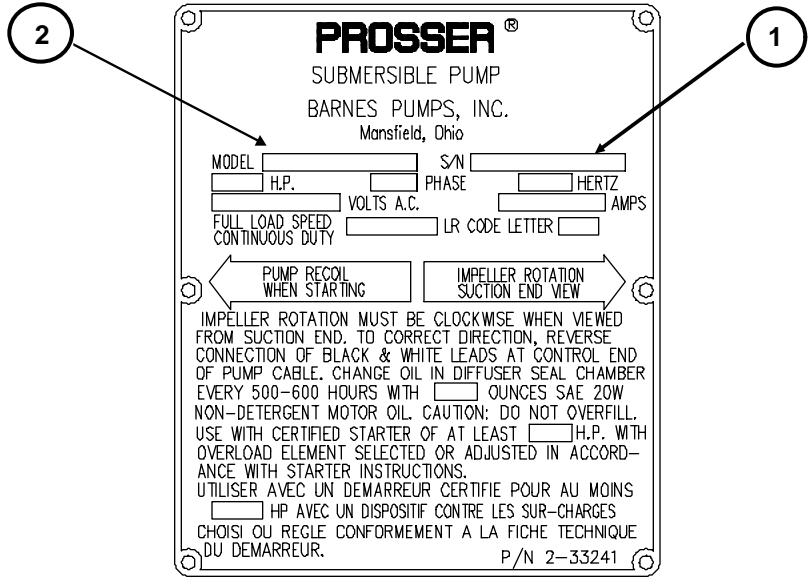


SECTION: G REPLACEMENT PARTS

G-1 ORDERING REPLACEMENT PARTS:

Your local Prosser distributor can supply parts and repair service. When ordering parts, **ALWAYS** furnish the following information: Specify pump model number as shown on nameplate, serial number, part number, item number and part name.

1. Pump serial number. (G-1)
2. Pump model number. (G-2)
4. Part description.
5. Item part number.
6. Quantity required.
7. Shipping instructions.
8. Billing Instructions.



G-1 SERIAL NUMBER:

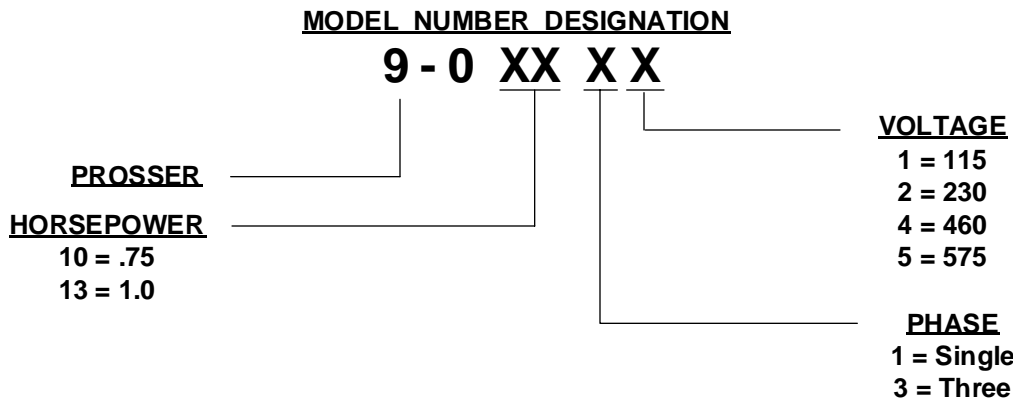
The Serial Number block will consists of a six digit number, which is specific to each pump and may be preceded by a alpha character, which indicates the plant location. This number will also be suffixed with a three or four digit number, which indicates the date the unit was built (Date Code).

EXAMPLE: A012345 495

Reference the six digit portion (Serial Number) of the number when referring to the product.

G-2 MODEL NUMBER:

This designation consist of numbers which represent, Pump Line, Horsepower, Motor phase, Voltage and Variations (as shown below). This Number is used for ordering and obtaining information.



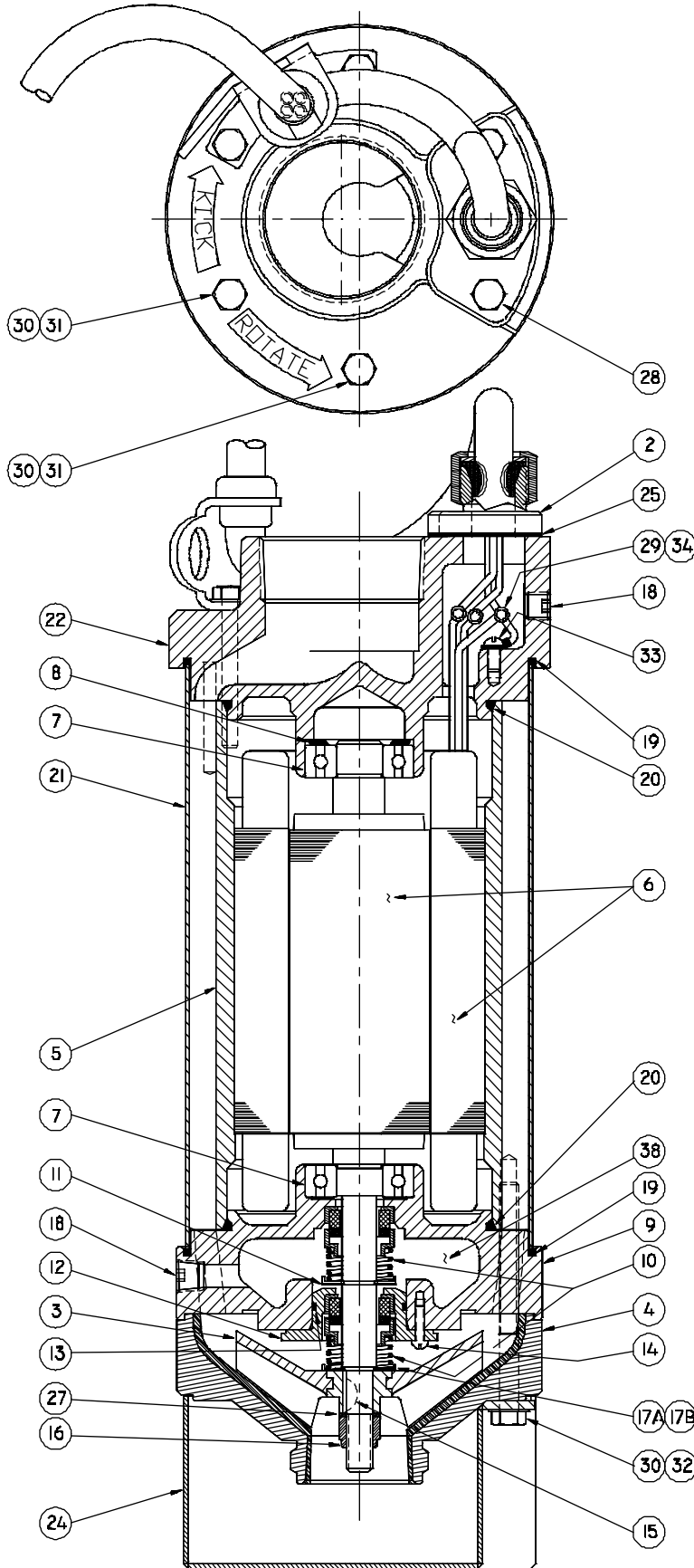


Fig. 13

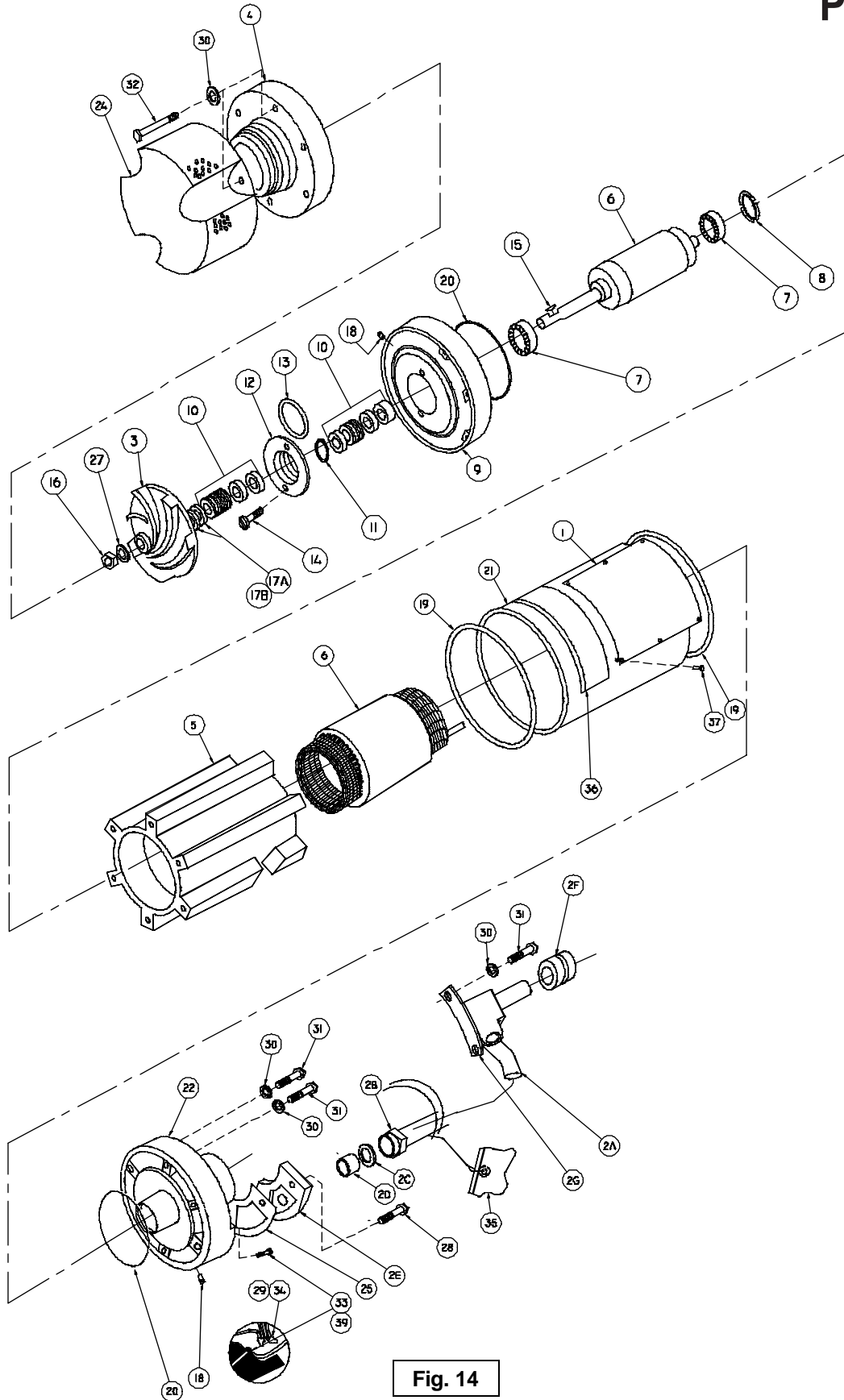


Fig. 14

PARTS KITS

Bearing & Seal Kit.....P/N - 9-01354 † 7,8,10,11,13,15,16,17a,17b,27.

O-Ring Kit.....P/N - 9-01353 † 2d,13,19,20,25,29.

Seal Tool Kit (Pusher & Bullet).....T/L - 21354

PARTS LIST

ITEM	QTY.	DESCRIPTION		PART NO.
1	1	Name Plate		2-33241
2	1	Cable & Gland Assy	.75/1HP, 115V.	9-100723-14
	1	Cable & Gland Assy	.75/1HP, 230/460/575	9-100723-18
2a	1	* Cable, 5 ft.	.75/1HP, 115V.	9-100958-5
	1	* Cable, 25 ft.	.75/1HP, 230/460/575	9-100892-25
2b	1	* Cable Grip Nut	Stainless Steel	2-12061-1
2c	1	* Cable Grip Washer	Steel	2-21004-4
2d	1	*† Bushing	Neoprene	2-12022-1
2e	1	* Cable Gland	Aluminum	9-001900-2
2f	1	* Strain Relief Bushing	Nylon	2-28003-2
2g	1	* Cable Support Bracket	Stainless Steel	112560
3	1	Impeller (Black), 3/4HP		9-100200-2
	1	Impeller (Red), 1HP		9-100200-3
4	1	Suction Case		615170
5	1	Frame (Franklin)		615016-001
6	1	Motor	.75/1HP, 115/230V, 1Ph	088853
	1	Motor	.75/1HP, 230/460V, 3Ph	088854
	1	Motor	.75/1HP, 575V, 3Ph	088855
7	2	† Bearing		2-34001
8	1	† Bearing Loading Spring		2-30001
9	1	Diffuser (Franklin)		615171-2FK
10	2	† Shaft Seal	Carbon/Ceramic/Buna-N	2-31036
11	1	† Snap Ring		2-27002-50
12	1	Seal Retainer		615172
13	1	†† O-Ring		2-31003-026
14	2	Rd. Hd. Screw	6-31 x .50"Lg.	2-22003-13
15	1	† Key	.093" x .50"	2-353308-2
16	1	† Lock Nut, Impeller	3/8-24, Stainless	2-12015-2
17a	A/R	† Shim, .016 Thk		2-21002-64
17b	A/R	† Shim, .032 Thk.		2-21002-65
18	1	Pipe Plug	.125" NPT, Stainless	2-32004-8
19	1	† O-Ring		2-31003-158
20	2	† O-Ring		2-31003-239
21	1	Outer Shell (Franklin)		615017-001
22	1	Discharge Head (Franklin)		9-100700-2FK
24	1	Strainer	Stainless Steel	9-100000-4
25	1	† Gasket, Terminal Box		9-001902
27	1	† Lockwasher, Impeller	3/8, Stainless	550048
28	2	Capscrew	1/4-20 x 3.25"Lg, Stainless	1-19-1
29	2	† Connector	.75/1HP, 115V, 1Ph & 230V, 3Ph	2-12014-1
30	13	Flat Washer	1/4 Stainless	086538
31	4	Capscrew	1/4-20 x 2.00"Lg., Stainless	1-526-1
32	6	Capscrew	1/4-20 x 3.25"Lg., Stainless	1-19-1
33	1	Rd. Hd. Screw	10-32 x 1/4"Lg., Brass	2-86-7
34	1	Connector	.75/1HP, 230V, 1Ph & 460V, 3Ph	625-00163
35	1	Tag, Lead, Ground		2-33012
36	1	Decal, Rotation (3 Phase)		2-33024-2
37	6	Rivet		2-28002-1
38	3.5oz	Oil, Navy		A3195AB
39	1	Lockwasher	#10 Steel	21-10-3

* Included with item number 2.

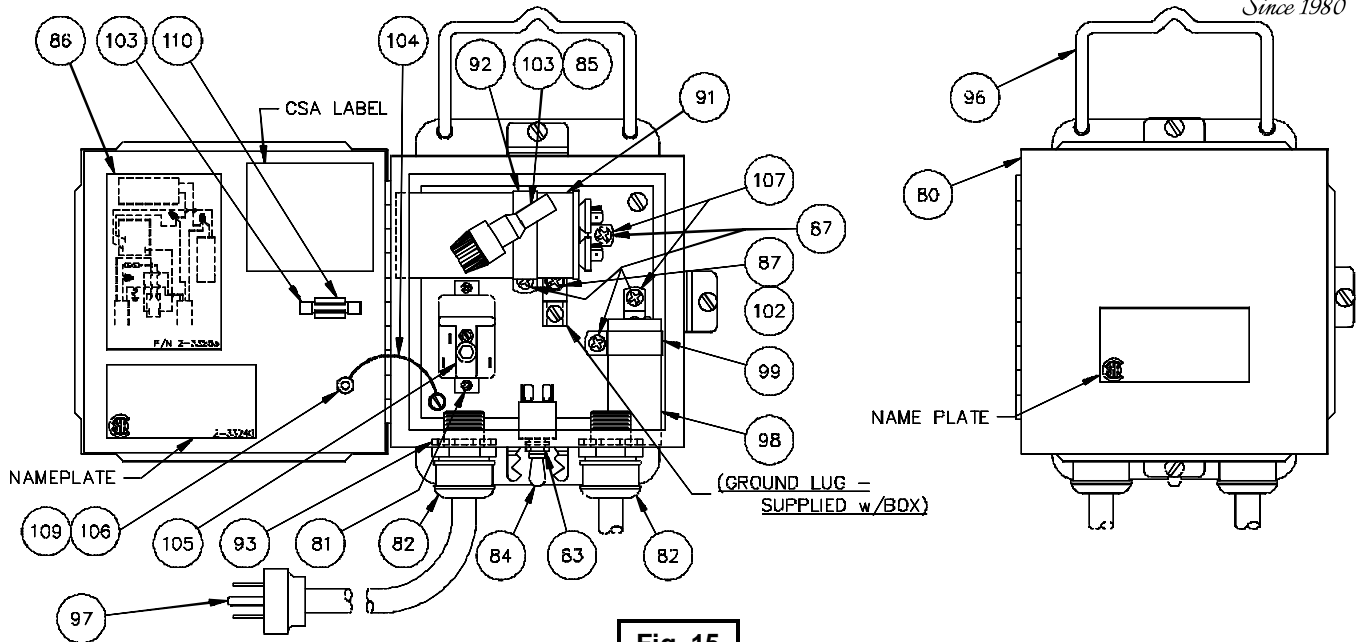


Fig. 15

PARTS LIST

P/N: 9-101811-02, NEMA 4, .75HP, 1Ph, 115V.

P/N: 9-101812-02, NEMA 4, .75HP, 1Ph, 230V.

ITEM	QTY.	DESCRIPTION	PART NO.
80.	1	Enclosure, NEMA 4, 1 Phase	9-100853
81	2	Screw	2-22009-10
82	2	Connector	2-12017-2
83	1	Seal (Toggle Switch)	2-31023
84	1	Toggle Switch	2-13024
85	1	Fuse Holder	2-13026
86	1	Connection Diagram	2-33256
	1	230V., 1 Phase	2-33259
87	5	Screw	2-22009-16
88	1	Wire (Not Shown)	9-975938-13-07
89	2	Wire (Not Shown)	9-975938-5-04
90	1	Wire (Not Shown)	9-975938-22-06
91	1	Capacitor, Run	035864
92	1	Clamp, Capacitor	2-12019-5
93	2	Connector Nut	2-12055-1
94	2	Wire Connector (Not Shown)	2-12026-2
95	1	Wire Connector (Not Shown)	2-12026-3
96	1	Handle	9-100803
97	1	Cable, 6Ft.	9-100993-6
	1	230V.	9-100995-6
98	1	Capacitor, Start	2-13010-17
99	1	Clamp	2-12019
100	1	Wire Assembly (Not Shown)	9-975938-10-05
101	1	Wire Assembly (Not Shown)	9-975938-10-04
102	1	Lockwasher, Ground	2-21001-15
103	1	Fuse, 115V	2-13042-120
	1	Fuse, 230V.	2-13042-070
104	1	Wire Assembly	112239
105	1	Relay	625-02641-001
	1	230V.	625-02650-001
106	2	Lockwasher	2-21001-20
107	2	Clamp, Cable	625-00320
108	1	Terminal, Disconnect (Not Shown)	2-12012-1
109	1	Hex Nut	15-4-1
110	1	Clamp, Fuse, Holder	112553

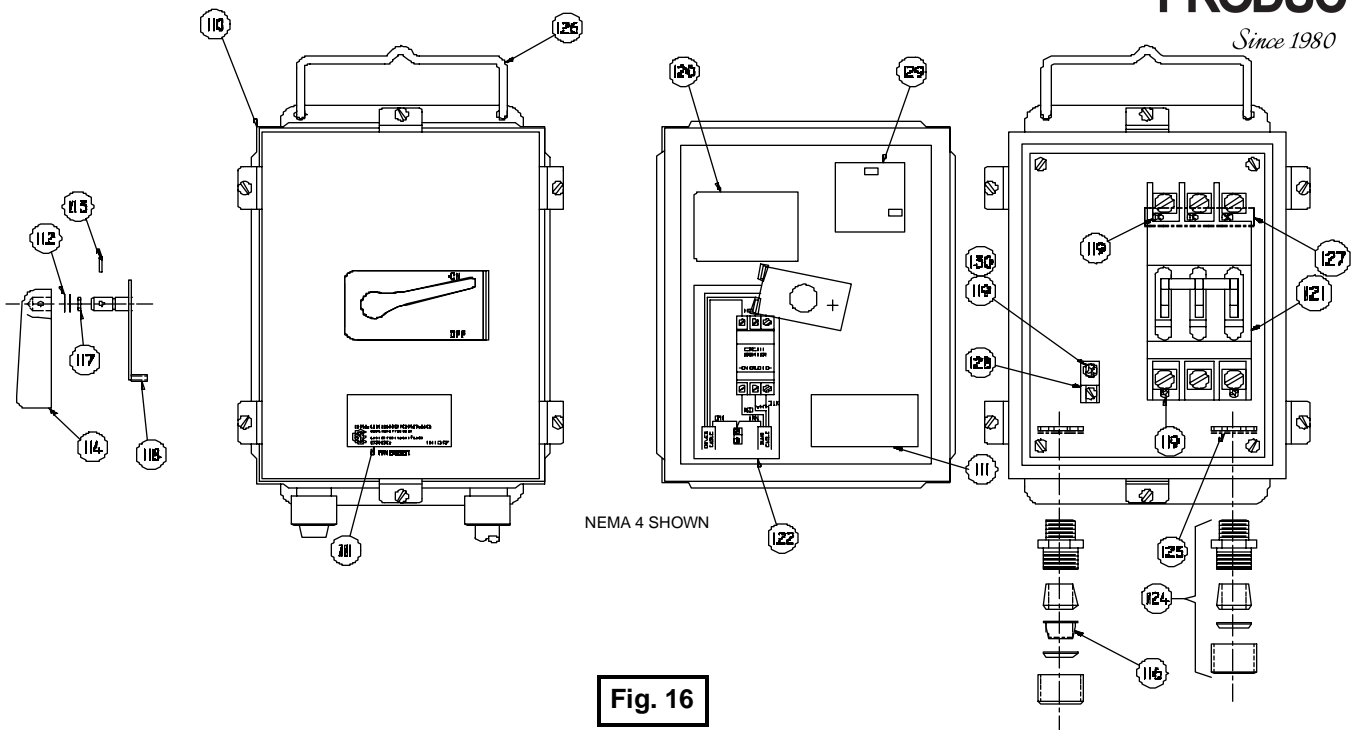


Fig. 16

PARTS LIST

P/N: 9-075832-13, NEMA 3R, .75HP, 230V, 3PH P/N: 9-075832-04, NEMA 4, .75HP, 230V, 3PH
P/N: 9-100834-13, NEMA 3R, .75/1HP, 460V, 3PH P/N: 9-100834-04, NEMA 4, .75/1HP, 230V, 3PH
P/N: 9-100835-13, NEMA 3R, .75/1HP, 575V, 3PH P/N: 9-100835-04, NEMA 4, .75/1HP, 230V, 3PH
P/N: 9-100832-13, NEMA 3R, 1HP, 230V, 3PH P/N: 9-100832-04, NEMA 4, 1HP, 230V, 3PH

ITEM	QTY.	DESCRIPTION	PART NO.
110.	1	Enclosure, NEMA 3R (-13)	9-840814
	1	Enclosure, NEMA 4 (-04)	9-840859-1
111.	2	Name Plate	2-33237
112.	A/R	♣ Shim Washer	2-21002-64
113.	1	♣ Roll Pin	2-28008-3
114.	1	♣ Handle	9-840870
115.	1	♣ Mounting Lable, (Not Shown)	2-33007
116.	1	♣ Caplug	2-32066-17
117.	1	♣ O-Ring	2-31003-010
118.	1	♣ Actuator Assembly	9-840860
119.	6	Screw	2-22009-16
120.	1	Caution Lable	2-33016
121.	1	Circuit Breaker, 230V, 3Ph, .75HP	9-250850-036
	1	600V., 3.6A	9-100850-034
	1	Circuit Breaker, 460V, 3Ph, .75/1HP	480V., 2A
	1	Circuit Breaker, 575V, 3Ph, .75/1HP	600V., 1.5A
	1	Circuit Breaker, 230V, 3Ph, 1HP	480V., 4.5A
122.	1	Wiring Diagram	2-33065
123.	2	♣ Connector, Nut	2-12055-2
124.	2	Connector, Cable, NEMA 3R	2-12005-2
	2	Connector, Cable, NEMA 4	2-12017-3
125.	2	Lable, (Not Shown)	2-33011
126.	1	Handle, NEMA 3R	9-100803
	1	Handle, NEMA 4	9-840867
127.	1	Mounting Bracket	2-28014
128.	1	Ground Lug	086135
129.	1	Name Plate, CSA	085809
130.	1	Lockwasher	2-21001-15

♣ Used with NEMA 4 control ONLY.

Single Phase & Three Phase Control Panel Schematics:

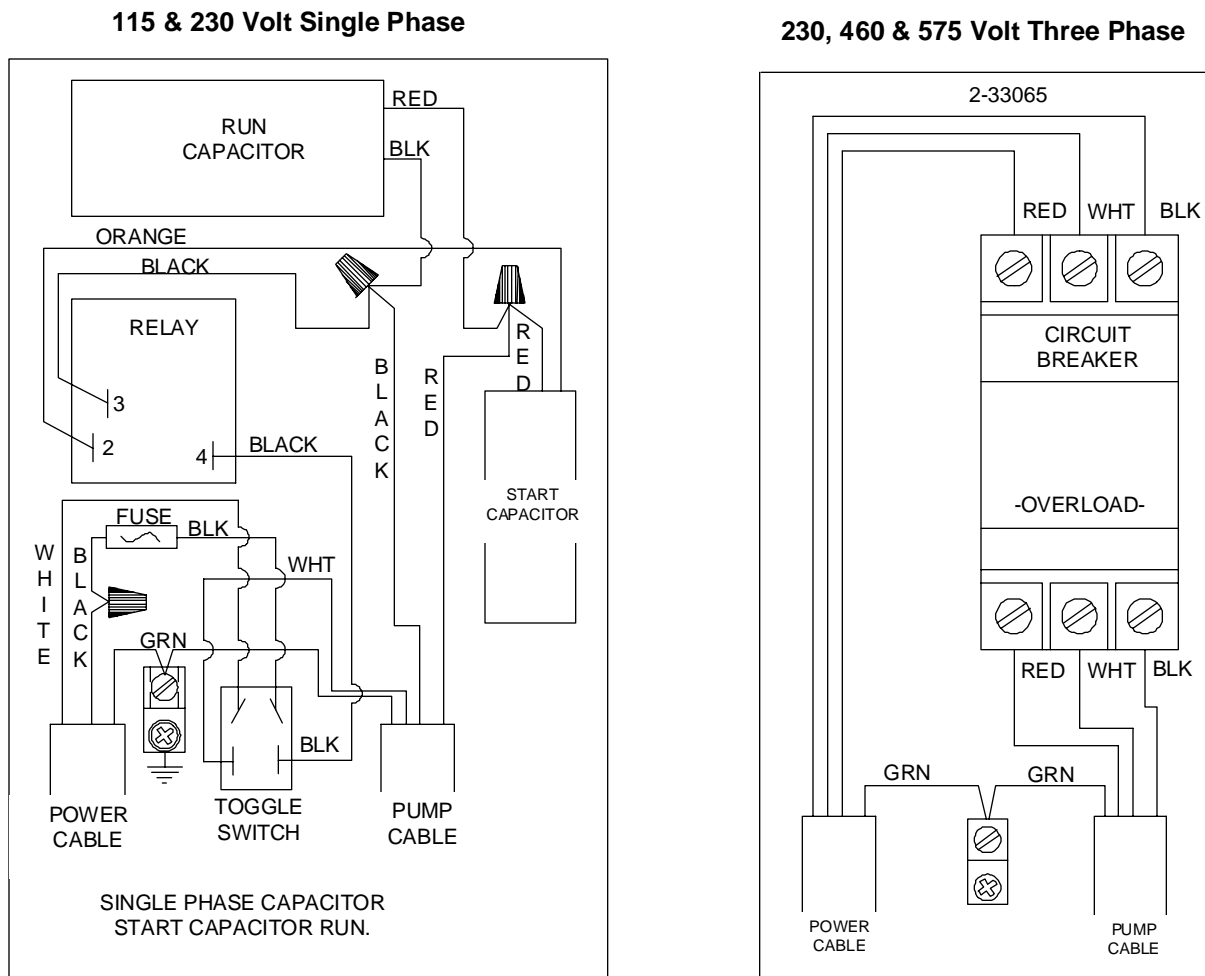
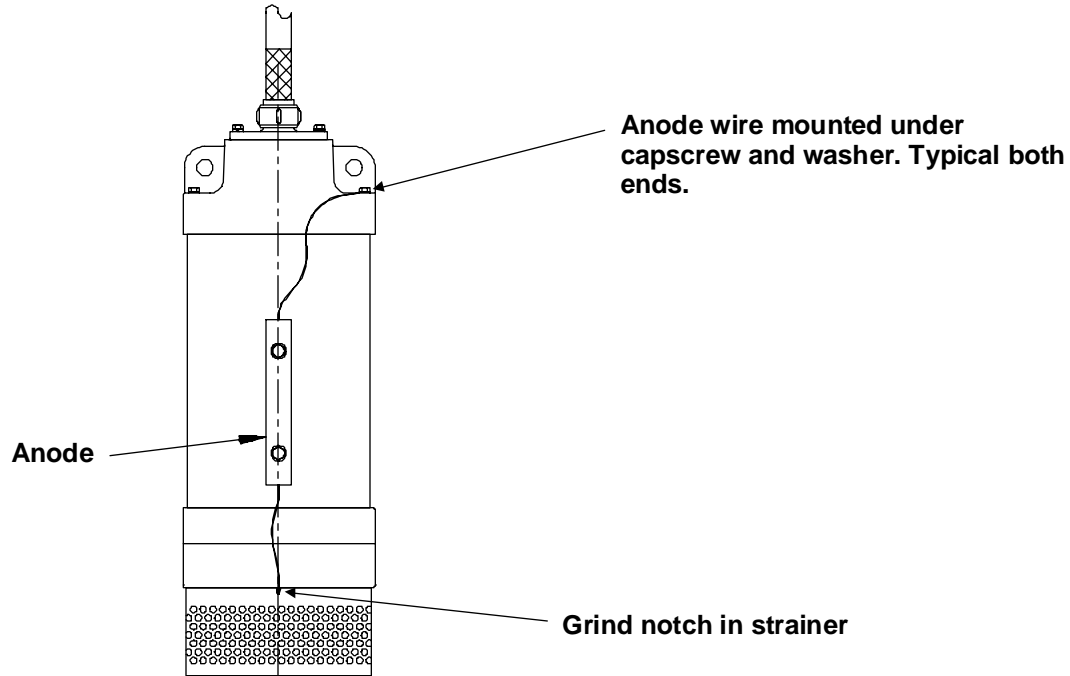


Fig. 17

**Galvanic Protection Kit
P/N: 9-100572**

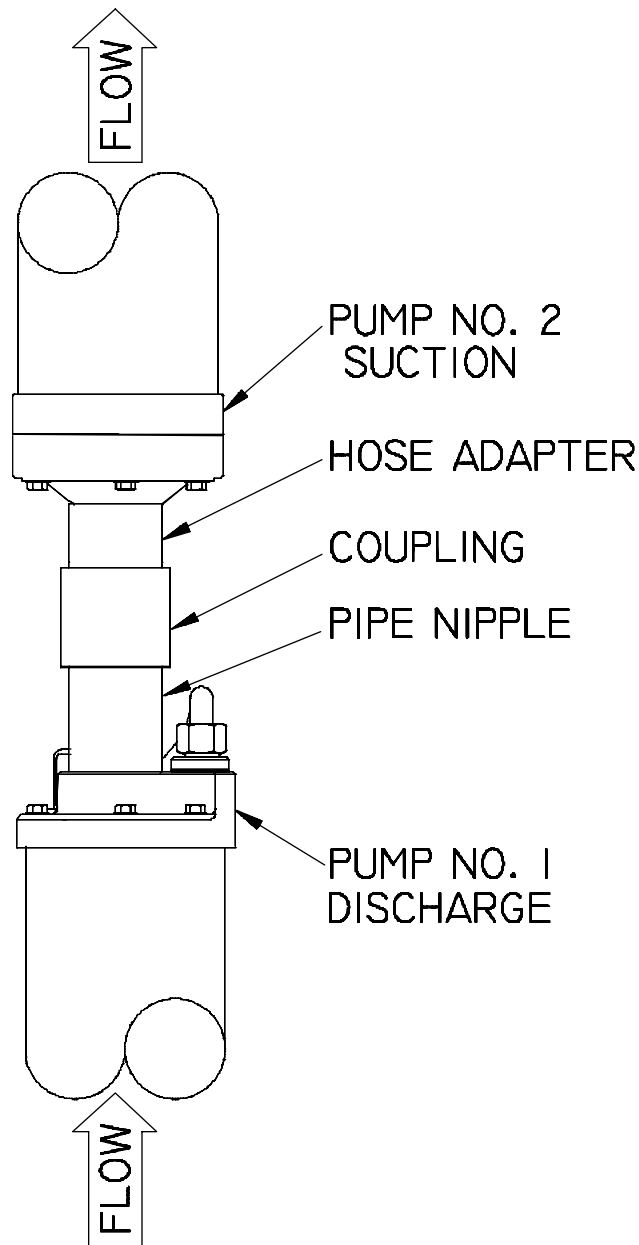


PARTS LIST

QTY.	DESCRIPTION	PART NO.
2	Flat Washer, 1/4" Stainless	2-210002-59
2	Hex Hd Screw, 1/4-20 x .875"Lg. Stainless	2-23021-40
1	Zinc Anode Sensor	9-500520

1. Pump must be ordered with the Galvanic Protection Kit to have the correct frame and outer shell.
2. Align two clearance holes in outer shell with the two drilled and tapped holes in frame, before tightening cap screws on the suction nozzle.
3. Fill the two drilled & tapped holes in frame approximately half full of electrical bonding grease part number 2-45003-1.
4. Install washers and capscrews through zinc anode and into the frame holes, partially filled with bonding grease and tighten securely.
5. Route wire from anode to the suction nozzle. Loosen suction nozzle capscrew & washer and install wire between washer & suction nozzle, retighten capscrew. Route other wire to discharge head and install under discharge head capscrew and washer.
6. Slip suction strainer on pump, align mounting screws, mark strainer where anode wire passes between suction nozzle and strainer. Grind a notch in the strainer to allow clearance for the wire. Install the strainer.

Series Adapter Kit
P/N: 9-001970



PARTS LIST

QTY.	DESCRIPTION	PART NO.
1	Pipe Nipple, Galv. 2" NPT x 4" Lg	2-32001-137
1	Hose Adapter, 1.50" NH x 2" NPT	2-32005-6
1	Pipe Coupling, 2" NPT Galv.	2-32047-9