



PIPELINE INSPECTION
TECHNOLOGY

GatorCam4™ system

ADVANCED PERFORMANCE. CLASS LEADING FLEXIBILITY





PORTABLE CONTROLLER

Light-weight controller with optional built-in rechargeable battery (GatorCam4+), weatherproof and easy to use.



ULTRA-TOUGH HIGH RESOLUTION CAMERAS

Stainless steel construction in a compact design. High resolution sensors and ultra bright white LEDs ensure a clear picture, even when submerged in water up to 330' (100m) deep.

GatorCam4™ pushrod inspection systems redefine convenience and control in pipeline inspection.

At the heart of the GatorCam4 system is the weatherproof GatorCam4 controller, which displays color footage in digital quality on an ultra-bright 8" TFT screen. USB flash drive and Compact Flash storage options along with PC connectivity provide flexible data storage and comprehensive reporting capabilities.

The GatorCam4+ controller option features an internal lithium-ion battery, providing convenient power for up to a full day's typical usage, removing the inconvenience and set-up time of an external power lead.

GatorCam4 systems have been designed to deliver controllable and high quality video inspection for any situation, from residential work and commercial use through to specialist plant and municipal applications.

Fully sealed 1" (25mm) and 2" (50mm) cameras can be mounted on a range of rods: from the ultra-flexible 100' (30m) Plumbers reel, designed for accessing tight corners, to the 500' (150m) Specialist reel designed to push for long distances. A range of compatible sondes, skids, brushes and accessories completes the package.

DIGITAL RECORDINGS

The fully digital controller system architecture provides precise control over inspections and recordings. Digital rotate, pan and zoom functions let you focus in on problem areas during live or recorded inspections.

Video and still images are recorded directly onto USB memory sticks or Compact Flash cards for easy management and transfer.

Tough and convenient high speed USB flash drives or Compact Flash cards are widely available in a variety of memory sizes, so you can choose the type and size of storage device that meets your needs. With no moving parts your valuable data is protected against shocks and impacts.

ONE-TOUCH RECORDING AND STILL PICTURE CAPTURE

A single key press on the ruggedized keypad records high quality, full digital video, which is automatically time and date stamped and logged against the job that you are working on. Similarly, still pictures can be captured, inspected and filed at any point during your inspection with a single key press.

An 8Gb storage device is capable of storing up to 7 hours of high quality video.

To enhance the inspection, audio can be added to recordings via the optional microphone headset, and text commentary incorporated using the splashproof keyboard. To add flexibility, up to 20 pages of text can be stored into the controller module.

RUGGEDIZED CONSTRUCTION

Despite weighing less than 13.5lbs (6.2kg), the GatorCam4 controller is designed to operate reliably in harsh weather conditions. The tough polypropylene casing is designed to resist scuffs and impacts, while the comprehensive sealing gives an IP53 rating when operating – and IP55 with the covers closed, minimizing the risk of damage from debris or water ingress. The cameras are designed to operate at up to 11 bar of pressure, the equivalent of a depth of 330' (100m) of water.

USB FLASH DRIVES

The GatorCam4 command module supports the popular USB flash drive: simply plug your own or your customer's high speed memory stick into the USB slot and start recording and storing inspection videos, photos and observations directly into it.

USB memory sticks can be connected to any PC for direct access to your digital data without the need of an external card reader or the GatorCam4 controller.

OUTSTANDING PICTURE QUALITY

The GatorCam4 system offers two cameras, a 1" (25mm) and a 2" (50mm), equipped with high resolution sensors and the latest generation ultra-bright white LEDs, which combine to deliver a crisp, clear picture in most pipe conditions.

The GatorCam4 self-leveling 2" (50mm) camera features a sapphire window to protect its lens and a sensor which boasts over 39% higher horizontal resolution than its predecessor (460 vs 330 usable horizontal TVL).

The GatorCam4 1" (25mm) camera features a tough polycarbonate cover to protect the LEDs all in a small, compact package, specifically designed to help navigating through bends.

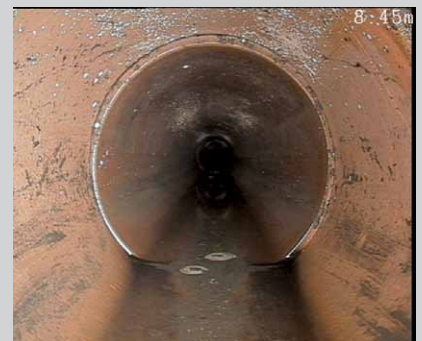
Both cameras come with a manual focus tool which allows you to adjust the focus of your camera to the correct pipe size ensuring you do not miss the smallest defect.

Packaged in tough 303 stainless steel cases, they can withstand 11 bar of pressure.



DIGITAL VIDEO

Digital zoom and pan to focus in on problem areas. Rotate images to make them easier to interpret. Pictures and video are stored in portable USB or Compact Flash memory.



PLUMBERS REEL

Where extra flexibility is needed, the Plumbers reel coupled with the compact 1" (25mm) camera offers outstanding performance around tight bends and traps, negotiating most traps (from 2"/50mm) and bends (from 1 1/4"/32mm). The Plumbers system is the ideal tool for your small pipe plumbing needs.

The flexible rod termination has a built-in transmitter sonde (512Hz/640Hz) which allows you to pinpoint its location and depth without compromising maneuverability around tight corners.



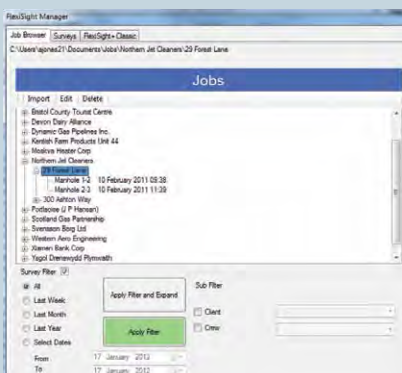


A RANGE OF RODS TO SUIT YOUR APPLICATION

From 100' (30m) for residential and small commercial plumbing use, right up to 500' (150m) for specialist applications.

INTEGRATED REPORT WRITER

Quickly enter observations on site and export Sewer.Dat report files without needing to connect up – then view and edit them at your convenience on a PC and produce detailed reports with pipe graphics.



EASY TO USE SOFTWARE INTERFACE

The GatorCam4 controller software has been specifically developed to make the GatorCam4 system easy and intuitive to use. Setting up and customizing your controller is very simple thanks to the color based list menus, which clearly define all the options available.

Adding text to your survey is never more than one keyboard click away. Browse or edit up to 20 pages of text or automatically use them as titles at the beginning of your video recordings.

ORGANIZE WORK EFFECTIVELY

The GatorCam4 controller quickly organizes your work in "Job" folders which are linked to the inspection you are carrying out, making the review and storage of videos, photos and observations straightforward.

Jobs can be created very quickly at the start of your first recording by entering a minimum set of information or by accessing the "Job Browser" menu and entering detailed information about your client, site and survey.

Jobs can be expanded by adding multiple surveys to the site you are inspecting or by adding different sites to the client you are working for.

BE MORE PRODUCTIVE ON-SITE

Use the comprehensive, built-in, GatorCam4 reporting system to quickly fill out report observations on-site without the need for extra equipment. Report templates are customizable to meet your own requirements.

Entering detailed observation, including grading and photos, could not be easier, thanks to the built-in WRC™, PACP or custom made defect code lists.

Produce a SEWER.DAT report file directly from your GatorCam4 controller.

MANAGE YOUR DATA AND PRODUCE REPORTS

The FlexiSight™ Manager software is the ideal PC companion of the GatorCam4 controller. With this Windows® XP/Windows Vista®/Windows® 7 compatible software, you will be able to import, store and manage all your digital inspection data.

Use the "Job Browser" screen to quickly import and browse all your saved jobs.

Use the "Surveys" screen to review and edit videos, take snapshots, annotate photos and review, edit or create observations.

Produce comprehensive customizable reports, with your company logo, incorporating pipe graphics and color coded defect grading (requires Microsoft® Word 97 or higher).

Ultra-bright 8" TFT screen

Durable keypad for easy access to all key functions:

- One-touch still picture capture
- One-touch record
- One-touch digital functions

Splashproof keyboard for text entry

Easily transportable compact reel options

Waterproof stainless steel camera with ultra bright white LEDs

Video In/Out

Audio In/Out

USB flash drive socket

PC connection

Power socket

Internal battery power connector (GatorCam4+ controller only)

Compact Flash card

Battery status indicator (GatorCam4+ controller)

Ultra-flexible Plumbers reel



Each GatorCam4 system comes complete with a universal easy-fit brush skid set, that allows the 1" (25mm) camera to be used in pipes up to 4" (100mm) diameter and the 2" (50mm) camera in pipes up to 6" (150mm) diameter. Brushes can be conveniently replaced in seconds. Additional standard equipment may vary due to regional variations.



GatorCam4 system specifications

GatorCam4 systems include as standard:

- GatorCam4 or GatorCam4+ controller.
- Choice of NTSC/PAL color camera and 512/640Hz flexisonde:
 - 1" (25mm) camera, skid ball and sonde.
 - 2" (50mm) self-levelling camera, skid ball and 1.4" (35mm) sonde.
- Choice of pushrod reels:
 - 100' (30m) Plumbers reel.
 - 115' (35m) Mini reel.
 - 200' (60m) or 400' (120m) Midi reels.
 - 500' (150m) Specialist reel.
- Controller adaptor clamp (optional for the Plumbers).
- FlexiSight™ Manager Windows® PC software.
- Compact Flash card.
- Universal brush and skid kit.
- Splashproof keyboard, IP67 external power supply (GatorCam4), 12V automotive jackplug lead.
- Internal battery options: 10-30V automotive charger, IP54 mains adaptor

GATORCAM4 AND GATORCAM4+ CONTROLLERS

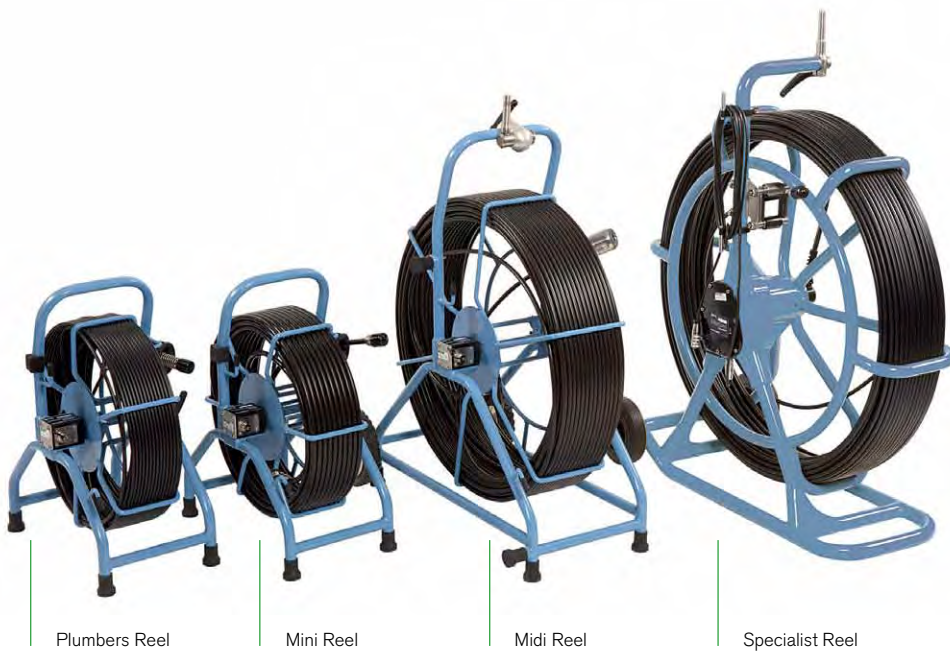
Power requirements	GatorCam4 (+) controller input	12-24VDC, 40W
	External power supply (PSU) input	100-240VAC, 50-60Hz, 1.2A
	GatorCam4+ automotive battery charger input	10-30VDC, 4.0A
Battery capacity (GatorCam4+)	14.8V, 6.6Ah (98Wh)	
Battery run-time (GatorCam4+)	Up to 1 day's typical usage, 7hrs view only /4hrs continuous recording*	
Display	8" Industrial TFT	
Storage	High speed Compact Flash Card or USB flash drive	
Connectivity	USB, Analog video in/out (PAL/NTSC), Analog audio in/out	
Environmental protection	GatorCam4 (+) controller	IP55 (covers closed) IP53 (covers open and socket panel closed)
	GatorCam4 External PSU	IP67 rated for outdoor use
	GatorCam4+ External PSU option	IP54 rated for indoor use
Temperature	Storage:	-4°F to 176°F / -20°C to +80°C
	Operating:	14°F to 122°F / -10°C to 50°C
	Charging (GatorCam4+):	14°F to 104°F / -10°C to 40°C
Dimensions	14" x 14" x 8" (360 x 360 x 200mm)	
Weight	GatorCam4 controller	12lbs / 5.5kg
	GatorCam4+ controller	13.5lbs / 6.2kg

*May vary according to ambient conditions, accessories attached, recording time and other factors

RODS AND REELS	Plumbers	Mini	Midi	Specialist
Dimensions	22.4" x 16.9" x 10.6" 570 x 430 x 269mm	22.4" x 16.9" x 10.6" 570 x 430 x 269mm	33.5" x 29.5" x 16.5" 850 x 750 x 420mm	32.0" x 46.0" x 18.7" 813 x 1168 x 475mm
Weight	21lbs / 9.4 kg 25lbs / 11.2kg	24lbs / 11kg	40lbs / 18.2 kg 55lbs / 25kg	81.6lbs / 37kg
Construction	Powder-coated tubular steel frame			
Rod	100' / 30m 200' / 60m	115' / 35m	200' / 60m 400' / 120m	500' / 150m

CAMERAS	GatorCam4 1"/25mm Camera	Gatorcam4 2"/50mm Self-leveling Camera
Dimensions	1" x 1.52" / 25.4 x 38.7mm	1.89" x 2.87" / 48 x 72.8mm
Weight	0.1lbs / 0.06kg	0.8lbs / 0.36kg
Construction	Stainless steel/polycarbonate	Stainless steel/sapphire glass/ polycarbonate
Power	1.8W	3.8W
Environmental	IP68 to 330' (100m) /11bar	
Temperature	Storage: -4°F to 176°F / -20°C to +80°C Operating: 14°F to 122°F / -10°C to 50°C	
Focus	Adjustable	
Focal range	10mm to ∞	
Lighting	Ultra bright white LEDs	
LED luminance	≥ 75lm	≥ 208lm
Active pixels (HxV)	656 x 492 NTSC 768 x 576 PAL	768 x 492 NTSC 765 x 582 PAL
Horizontal resolution	≥ 460TVL	





Plumbers Reel

Mini Reel

Midi Reel

Specialist Reel



ACCESSORIES THAT EXTEND YOUR CAPABILITIES

Tailor your system to your needs with a range of solid sondes, flexisondes, cable and pipe locators and flexis.

Options

SONDE AND LOCATOR COMBINATION

By combining your GatorCam4 system with a suitable locator, you can pinpoint the camera's location and depth, providing a valuable tool for repairs and tracing alike. The RD7000DL+, capable of detecting 3 different sonde frequencies and featuring Dynamic Overload Protection and Compass, is specifically designed for the water industry, and capable of precisely locating a sonde even in electrically noisy areas.



BATTERY OPTIONS

Ultra-portable with our optional, rechargeable internal battery, which provides up to 4 hours* continuous operation. An automotive charger is supplied as standard, with mains chargers available separately.

External battery options are also available: the 7Ah (4 hours*) and 12Ah (8 hours*) battery are available. These come with mains chargers as standard, and automotive chargers are also available



*Figures are approximate and condition dependent.

EXTENDED MODULARITY

All cameras, controllers, rods and accessories are fully interchangeable*, giving you the flexibility to expand your system at your pace.

*Plumbers sonde not detachable.



GatorCam4™ system

**ADVANCED PERFORMANCE.
CLASS LEADING FLEXIBILITY.**



Global locations

USA

SPX Global Headquarters

13515 Ballantyne Corporate Place
Charlotte, NC 28277, USA
Tel: +1 704 752 4400
www.spx.com

Radiodetection

28 Tower Road, Raymond, Maine 04071, USA
Tel: +1 (207) 655 8525
Toll Free: +1 (877) 247 3797
Fax: +1 (207) 655 8535
Email: rd.sales.us@spx.com
www.radiodetection.com

Pearpoint

39-740 Garand Lane, Unit B
Palm Desert, CA 92211, USA
Tel: +1 800 688 8094
Tel: +1 760 343 7350
Fax: +1 760 343 7351
pearpoint.sales.us@spx.com
www.radiodetection.com

Radiodetection (Canada)

344 Edgeley Boulevard, Unit 34
Concord, Ontario L4K 4B7, Canada
Tel: +1 (905) 660 9995
Toll Free: +1 (800) 665 7953
Fax: +1 (905) 660 9579
rd.sales.ca@spx.com
www.radiodetection.com

EUROPE

Radiodetection Ltd. (UK)

Western Drive, Bristol BS14 0AF, UK
Tel: +44 (0) 117 976 7776
Fax: +44 (0) 117 976 7775
rd.sales.uk@spx.com
www.radiodetection.com

Radiodetection (France)

13 Grande Rue, 76220, Neuf Marché, France
Tel: +33 (0) 2 32 89 93 60
Fax: +33 (0) 2 35 90 95 58
rd.sales.fr@spx.com
<http://fr.radiodetection.com>

Radiodetection (Benelux)

Industriestraat 11
7041 GD 's-Heerenberg, Netherlands
Tel: +31 (0) 314 66 47 00
Fax: +31 (0) 314 66 41 30
rd.sales.nl@spx.com
<http://nl.radiodetection.com>

Radiodetection (Germany)

Groendahlscher Weg 118
46446 Emmerich am Rhein, Germany
Tel: +49 (0) 28 51 92 37 20
Fax: +49 (0) 28 51 92 37 520
rd.sales.de@spx.com
<http://de.radiodetection.com>

ASIA-PACIFIC

Radiodetection (Asia-Pacific)

Room 708, CC Wu Building
302-308 Hennessy Road, Wan Chai
Hong Kong SAR, China
Tel: +852 2110 8160
Fax: +852 2110 9681
rd.sales.cn@spx.com
www.radiodetection.com

Radiodetection (China)

Hongfu Mansion, Room 61622
Zheng Ge Zhuang, Bei Qi Jia Town
Chang Ping District
Beijing 102209, China
Tel: +86 (0) 10 8178 5652
Fax: +86 (0) 10 8178 5662
rd.service.cn@spx.com
<http://cn.radiodetection.com>

Radiodetection (Australia)

Unit H11, 101 Rookwood Road,
Yagoona NSW 2199, Australia
Tel: +61 (0) 2 9707 3222
Fax: +61 (0) 2 9707 3788
rd.sales.au@spx.com
www.radiodetection.com

Radiodetection is a leading global developer and supplier of test equipment used by utility companies to help install, protect and maintain their infrastructure networks. Radiodetection is a unit of SPX (NYSE: SPW), a global Fortune 500 multi-industry manufacturing company. With headquarters in Charlotte, N.C., SPX has 15,000 employees in more than 35 countries worldwide. Visit www.spx.com.

© 2013 Radiodetection Ltd. – SPX Corporation. All rights reserved. Radiodetection is a subsidiary of SPX Corporation. SPX, the green ">" and "X" are trademarks of SPX Corporation, Inc. Radiodetection and GatorCam are trademarks of Radiodetection Ltd. Microsoft, Windows, Windows Vista and Windows XP are either registered trademarks or trademarks of Microsoft Corporation in the United States and/or other countries. Due to a policy of continued development, we reserve the right to alter or amend any published specification without notice. This document may not be copied, reproduced, transmitted, modified or used, in whole or in part, without the prior written consent of Radiodetection Ltd.