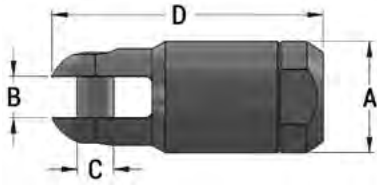


Power-Grip™ (Clevis)

The Power-Grip™ pulling eye is reusable and has a clevis style head that will attach directly over the looped ends of the bridle slings or other pulling attachments. All materials are stainless steel. Only four body sizes are used to cover the range from 1/0 to 2000 MCM cable. Note that these pulling eyes should always be used with a Line Swivel (00505 series).



Part No.	Maximum Cable Size	Maximum Core Diameter	Power-Grip Components					Weight	Threaded Cone Nut	Tapered Insert	Body	Fits Bridle Sling
			A	B	C	D						
24100-001	1/0 AWG	0.39" 9.9 mm	1-1/4" 32 mm	13/32" 10.3 mm	3/8" 9.5 mm	3-5/8" 92 mm	0.68 lb 0.30 kg	24006-001	24005-001	24008-001	1/4"	
24100-002	2/0 AWG	0.44" 11.1 mm	1-1/4" 32 mm	13/32" 10.3 mm	3/8" 9.5 mm	3-5/8" 92 mm	0.67 lb 0.30 kg	24006-002	24005-001	24008-001		
24100-003	3/0 AWG	0.50" 12.7 mm	1-1/4" 32 mm	13/32" 10.3 mm	3/8" 9.5 mm	3-5/8" 92 mm	0.64 lb 0.29 kg	24006-003	24005-001	24008-001		
24100-004	4/0 AWG	0.54" 13.7 mm	1-1/4" 32 mm	13/32" 10.3 mm	3/8" 9.5 mm	3-5/8" 92 mm	0.61 lb 0.27 kg	24006-004	24005-001	24008-001		
24100-025	250 MCM	0.61" 15.5 mm	1-1/4" 32 mm	13/32" 10.3 mm	3/8" 9.5 mm	3-5/8" 92 mm	0.58 lb 0.26 kg	24006-025	24005-001	24008-001		
24100-030	300 MCM	0.62" 15.7 mm	1-1/4" 32 mm	13/32" 10.3 mm	3/8" 9.5 mm	3-5/8" 92 mm	0.57 lb 0.26 kg	24006-030	24005-001	24008-001	1/4" & 3/8"	
24100-035C	350 MCM Compact	0.65" 16.5 mm	1-7/8" 48 mm	3/8" 9.5 mm	5/8" 15.9 mm	4-5/8" 117 mm	1.94 lb 0.88 kg	24006-035C	24005-035	24008-035		
24100-035	350 MCM	0.71" 18.0 mm	1-7/8" 48 mm	3/8" 9.5 mm	5/8" 15.9 mm	4-5/8" 117 mm	1.90 lb 0.86 kg	24006-035	24005-035	24008-035		
24100-050	500 MCM	0.81" 20.6 mm	1-7/8" 48 mm	3/8" 9.5 mm	5/8" 15.9 mm	4-5/8" 117 mm	1.80 lb 0.81 kg	24006-050	24005-035	24008-035		
24100-060	600 MCM	0.91" 23.1 mm	1-7/8" 48 mm	3/8" 9.5 mm	5/8" 15.9 mm	4-5/8" 117 mm	1.80 lb 0.81 kg	24006-060	24005-035	24008-035		
24100-070	700 MCM	0.97" 24.6 mm	2-1/8" 54 mm	25/32" 19.8 mm	11/16" 17.5 mm	5-1/4" 133 mm	2.90 lb 1.3 kg	24006-070	24005-070	24008-070	3/8" & 1/2"	
24100-075C	750 MCM Compact	0.94" 23.8 mm	2-1/8" 54 mm	25/32" 19.8 mm	11/16" 17.5 mm	5-1/4" 133 mm	2.80 lb 1.2 kg	24006-075C	24005-070	24008-070		
24100-075	750 MCM	1.00" 25.4 mm	2-1/8" 54 mm	25/32" 19.8 mm	11/16" 17.5 mm	5-1/4" 133 mm	2.70 lb 1.2 kg	24006-075	24005-070	24008-070		
24100-100C	500 mm ² Custom	1.03" 26.2 mm	2-1/8" 54 mm	25/32" 19.8 mm	11/16" 17.5 mm	5-1/4" 133 mm	2.60 lb 1.18 kg	24006-100C	24005-070	24008-070		
24100-100	1000 MCM	1.15" 29.2 mm	2-1/8" 54 mm	25/32" 19.8 mm	11/16" 17.5 mm	5-1/4" 133 mm	2.50 lb 1.1 kg	24006-100	24005-070	24008-070		
*24100-125	1250 MCM	1.29" 32.8 mm	2-3/4" 70 mm	1" 25.4 mm	7/8" 22.2 mm	7-1/4" 184 mm	6.70 lb 3.0 kg	24006-125	24005-125	24008-125	3/8" & 1/2"	
*24100-150	1500 MCM	1.41" 35.8 mm	2-3/4" 70 mm	1" 25.4 mm	7/8" 22.2 mm	7-1/4" 184 mm	6.40 lb 2.9 kg	24006-150	24005-125	24008-125		
*24100-175	1750 MCM	1.53" 38.9 mm	2-3/4" 70 mm	1" 25.4 mm	7/8" 22.2 mm	7-1/4" 184 mm	6.20 lb 2.8 kg	24006-175	24005-125	24008-125		
*24100-200C	45 mm Custom	1.75" 44.5 mm	2-3/4" 70 mm	1" 25.4 mm	7/8" 22.2 mm	7-1/4" 184 mm	4.70 lb 2.14 kg	24006-200C	24005-125	24008-125		
*24100-200	2000 MCM	1.63" 41.4 mm	2-3/4" 70 mm	1" 25.4 mm	7/8" 22.2 mm	7-1/4" 184 mm	5.90 lb 2.6 kg	24006-200	24005-125	24008-125		

* Larger Power-Grips are machined from alloy steel and plated.